

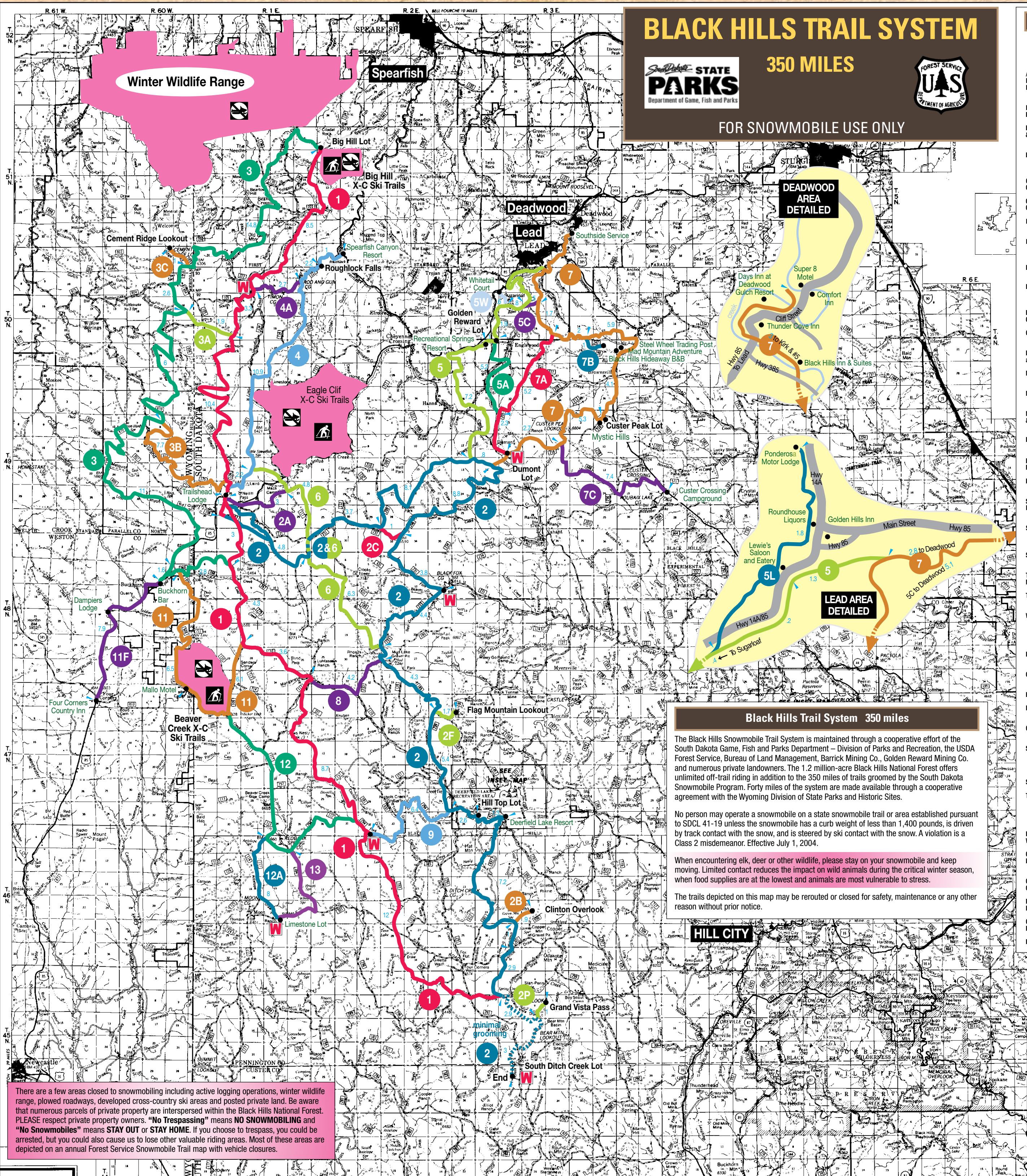
# BLACK HILLS TRAIL SYSTEM



350 MILES



FOR SNOWMOBILE USE ONLY



## TRAIL DIRECTORY

SITE	LOCATION	FACILITIES
<b>On-Trail Businesses</b>		
ALL INCLUSIVE SNOWMOBILE PACKAGES - Black Hills Central Reservations	Box 523, Deadwood, SD 57732 1-800-529-0105 Fax: 578-7705 Hours of operation: M-F 7a.m.-6p.m., S&S 9a.m.-4p.m.	Snowmobile rentals, lodging, food reservation service
Black Hills Hideaway Bed & Breakfast	Trail #7B: Turn W @ Tomahawk Country Club, onto Hideaway Rd for 1 mi. 578-3054 877-500-HIDE	(open 12-21-2008) (10a.m.-5p.m., closed Wed.)
Black Hills Inn & Suites	Trail #7: 1.5 mi. S. of Deadwood Main St. on Hwy 385, 888-886-6835 Fax 605-578-1130 www.blackhillsinn.com	Indoor pool and hot tub (7a.m.-10p.m.) Cont. Brkfst.
Buckhorn Bar & Grill	Junction of trail 11 & 11F; 25380 N. Hwy 85, 307-746-9487	(Fri.-Sun. 10a.m.-2a.m., Mon.-Thur. 10a.m.-10p.m.)
Comfort Inn	Trail #7: 1 mi. S. of Main St. Deadwood on Hwy 85 800-961-3096 578-7550 Fax 578-2836	(24 hrs. daily. Lounge, pool/hot tub, gaming+)
Custer Crossing Campground	Trail #7C: 15 miles S. of Deadwood on Hwy 385, 584-1009	(7:30a.m.-6p.m., Tues.-Sun., closed Mondays & Xmas day)
Dampiers Lodge	Trail #11F: 22 mi. N. of Newcastle, WY on Hwy 85, 307-746-4797 Fax 307-746-3368	(Daily 7a.m.-8p.m.) American Plan
Deadwood Gulch Resort	Trail #7: 1 mi. S. of Deadwood Main St. on Hwy 85, 578-1294 Fax 722-5369 800-695-1876	(open 24 hrs.) Casino, indoor hot tub (restaurant open 7a.m.-9p.m.)
Deadwood Super 8 Motel	Trail #7: 196 Cliff St., Deadwood, 578-2535 Fax 578-3604 (open 24/7, Pizzeria 11a.m.-11p.m.) www.deadwoodsuper8.com	
Deerfield Lake Resort	Trail #2: 14 mi. N.W. of Hill City off Deerfield Rd 11321 Gillette Prairie Rd. 574-2636 (hrs. 8a.m.-6p.m. daily) www.deerfieldlakeresort.com	(Closed Christmas day)
Four Corners Country Inn B&B	Trail #11F: 1,000' S. of junc. 85 & 585 at 24695 US Hwy 85. 307-746-4776	(by reservation or appointment)
Golden Hills Inn	Located at the intersection of Hwy 14A & Hwy 85 1-888-465-3080	(open 24/7)
Lewie's Saloon and Eatery	Trail #5: 25 mi. from Terry Peak turn-off on Hwy 85-14A. 584-1324	(opens at 11a.m.-11p.m.)
Mad Mountain Adventure	Trail #7: 6 mi. S. of Deadwood on Hwy 385, 877-678-1878 578-1878	(hrs. 8a.m.-5p.m.)
Mallo Motel	Trail #11: 478 Mallo Rd 4.5 mi. E. of 4 Corners on City Rd 810. 307-746-4094	(open daily)
Mystic Hills Cabins & Campgrounds	Trail #7: 11 mi. S. of Deadwood on Hwy 385, then 5 mi. W. on FS Rd 216. 584-4713	(M-Th 11a.m.-9p.m., F 11a.m.-9p.m., Sat. 8a.m.-9p.m. & Sun. 8a.m.-8p.m.)
Ponderosa Motor Lodge	Trail #5L: North Lead on Hwy 14A, Lead, 584-3321 Fax 722-9913	(9a.m.-7p.m., Fri. & Sat. 8a.m.-9p.m.)
Recreational Springs Resort	Trail #5: 6 mi. S. of Lead on Hwy 85, 584-1228 Fax 584-1341	(8a.m.-9p.m. daily)
Roundhouse Liquors	Trail #5L: Intersection of Hwy 14A & Hwy 85 in Lead. 584-3300	(11a.m.-11p.m. daily)
Spearfish Canyon Lodge	Trail #4: 14 mi. S. of Spearfish on Hwy 14A in Spearfish Canyon. 584-3435 877-978-6343 Fax 584-3890	(open 24 hrs. daily) www.splacanyon.com
Southside Service	End of Trail #7, Deadwood	(M-F 7a.m.-6p.m., Sat. 7a.m.-12p.m., Closed Sun., Pay at pump 24hrs.)
Steel Wheel Trading Post	Trail #7: 5.5 mi. S. of Deadwood on Hwy 385, 578-9767 Fax 578-1517	(M-Sat. 8a.m.-7p.m., Sun. 7a.m.-7p.m.)
Thunder Cove Inn Motel & Gift Shop	Trail #7: 1 mile S. of Deadwood Main St. on Hwy 85. 578-3045	(7a.m.-8p.m. daily) www.thunder-cove.com
Trailhead Lodge	Trail #1: 21 miles S.W. of Lead on Hwy 85, 584-3464	(M-Sat. 8a.m.-10p.m., Sun. 8a.m.-8p.m.)
Whitetail Court Motel	Trail #5W: 2 mi. S.W. of Lead on Hwy 85, 584-9085 Fax: 584-6277	(8a.m.-8p.m. daily)
<b>Parking Areas</b>		
Big Hill Lot	Trail #1: 8 mi. S.W. of Spearfish on FSR 134, Chains or 4WD advised.	
Custer Peak Lot	Trail #7: 11 mi. S. of Deadwood on Hwy 385 and 5 mi. west on FSR 216.	
Hill Top Lot	Trail #2: 15 mi. N.W. of Hill City on Deerfield Rd.	
Dumont Lot	Trail #7: 4 mi. S.W. of Lead on Hwy 85 and 6 mi. south on Rochford Rd.	
Golden Reward Lot	Trail #5: 4 mi. S.W. of Lead on Hwy 85 and 5 mi. S. on Rochford Rd.	
South Ditch Creek Lot	Trail #2S: Turn W. off of Hwy 385 by Heritage Village, 8 mi. W. on Medicine Mtn. Rd., 2.9 mi. W. on Custer Limestone Rd., 5 N. on Spangier Rd., 3.8 mi. W. on Elliott Rd., 2.6 mi. N. on Ditch Creek Rd.	
Spearfish Canyon Lot	Trail #4, W. of Spearfish Canyon Lodge.	
Trailhead Lot	Trails #1 & 2; 21 mi. S. of Lead on left side of Hwy 85.	
<b>Other Attractions</b>		
Black Fox Warming Shelter	On Trail #2; portable warming shelter located at scenic Black Fox Campground.	
Cement Ridge Lookout	On Trail #3C; lower level of an active fire lookout serves as a wind shelter with spectacular view of four-state area.	
Clinton Overlook	On Trail #2A; scenic vista overlooking Gillette Prairie.	
Flag Mountain Lookout	On Trail #2F; spectacular vista overlooking Reynolds Prairie and surrounding area.	
Grand Vista Pass	On Trail #2P; spectacular vista of the Needles and surrounding area.	
Roughlock Falls	On Trail #4; scenic waterfalls.	

**Black Hills Trail System 350 miles**

The Black Hills Snowmobile Trail System is maintained through a cooperative effort of the South Dakota Game, Fish and Parks Department - Division of Parks and Recreation, the USDA Forest Service, Bureau of Land Management, Barrick Mining Co., Golden Reward Mining Co. and numerous private landowners. The 1.2 million-acre Black Hills National Forest offers unlimited off-trail riding in addition to the 350 miles of trails groomed by the South Dakota Snowmobile Program. Forty miles of the system are made available through a cooperative agreement with the Wyoming Division of State Parks and Historic Sites.

No person may operate a snowmobile on a state snowmobile trail or area established pursuant to SDCL 41-19 unless the snowmobile has a curb weight of less than 1,400 pounds, is driven by track contact with the snow, and is steered by ski contact with the snow. A violation is a Class 2 misdemeanor. Effective July 1, 2004.

When encountering elk, deer or other wildlife, please stay on your snowmobile and keep moving. Limited contact reduces the impact on wild animals during the critical winter season, when food supplies are at the lowest and animals are most vulnerable to stress.

The trails depicted on this map may be rerouted or closed for safety, maintenance or any other reason without prior notice.

There are a few areas closed to snowmobiling including active logging operations, winter wildlife range, plowed roadways, developed cross-country ski areas and posted private land. Be aware that numerous parcels of private property are interspersed within the Black Hills National Forest. PLEASE respect private property owners. "No Trespassing" means NO SNOWMOBILING and "No Snowmobiles" means STAY OUT or STAY HOME. If you choose to trespass, you could be arrested, but you could also cause us to lose other valuable riding areas. Most of these areas are depicted on an annual Forest Service Snowmobile Trail map with vehicle closures.

### LEGEND